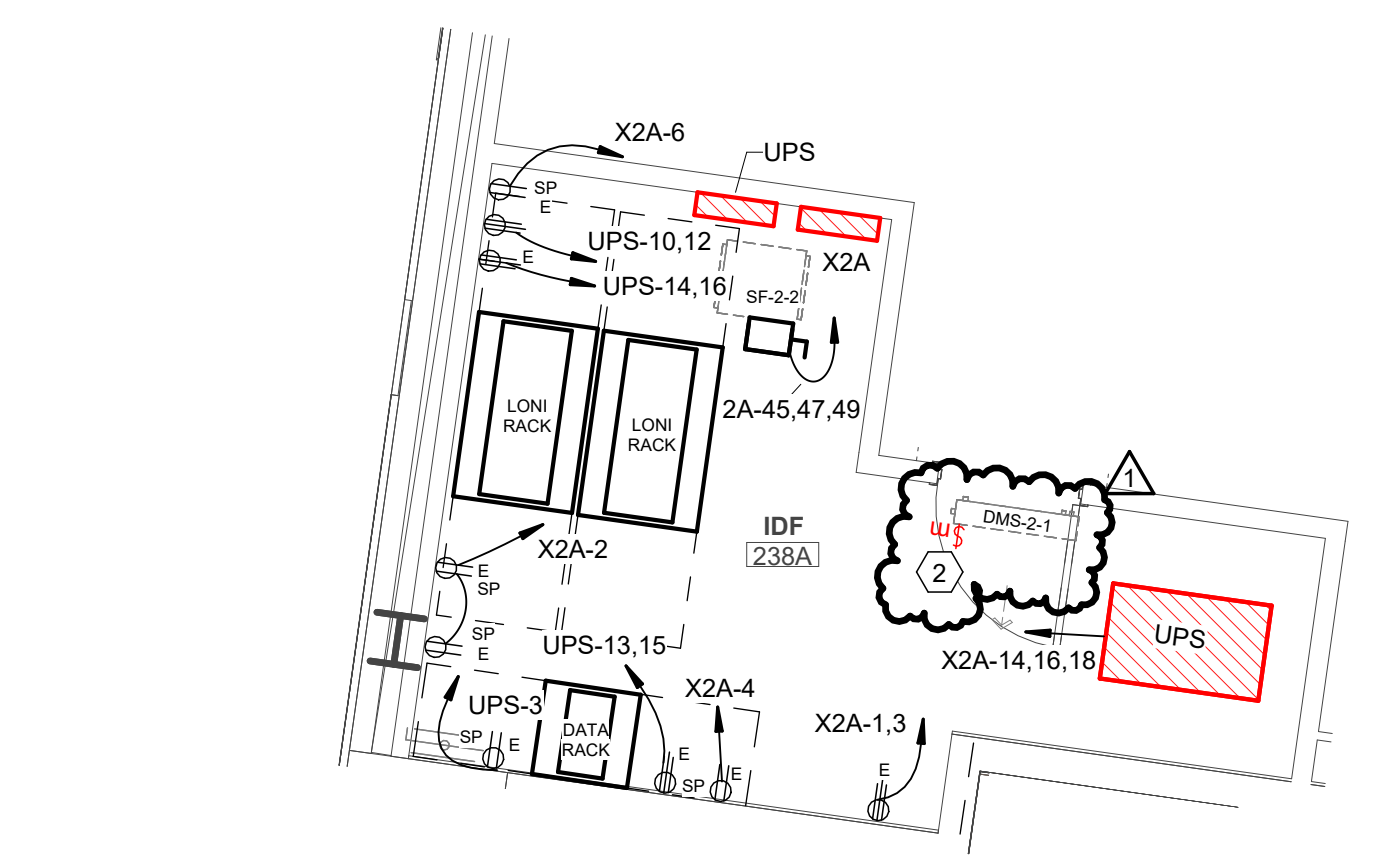


POWER KEYNOTES:

- 1 CONCEAL RECEPTACLE INSIDE WATER COOLER FRAME. COORDINATE TERMINATION REQUIREMENTS WITH MECHANICAL CONTRACTOR PRIOR TO ROUGH-IN. PROVIDE GFI BREAKER.
- 2 INDOOR UNIT IS POWERED FROM OUTDOOR UNIT. COORDINATE WITH MECHANICAL CONTRACTOR.
- 3 POP-UP OUTLET IN TABLE/COUNTER TOP. RE: ARCH.
- 4 1" C BETWEEN OUTLETS SHOWN FOR OWNER FURNISHED AND INSTALLED AUDIO/VISUAL CABLING.
- 5 PATIENT HEADWALL UNIT TO BE PROVIDED AT EACH BED LOCATION. REFER TO ARCHITECTURAL DETAILS. COORDINATE ELECTRICAL ROUGH-IN FOR HEADWALL CIRCUITS SERVING STANDARD AND RED COLORED RECEPTACLES. CIRCUITING ON PLAN IS SHOWN FOR HOMERUN DESIGNATIONS ONLY. REFER TO HEADWALL ELECTRICAL TYPICAL DETAIL ON THIS SHEET FOR ACTUAL DEVICE QUANTITIES AND CIRCUITING REQUIREMENTS.
- 6 APPROXIMATE LOCATION OF 125A/3P MAIN XRAY PANEL AND SHUNT TRIP CIRCUIT BREAKER. VERIFY LOCATION WITH EQUIPMENT LAYOUT PRIOR TO ROUGH-IN AND PROVIDE ALL CODE REQUIRED CLEARANCES. CONTRACTOR SHALL EXTEND CONDUIT AND WIRE IN WALL FROM LINE SIDE OF CIRCUIT BREAKER TO X-RAY EQUIPMENT VERTICAL TROUGH (SEE X-RAY SITE SPECIFIC DRAWINGS). CONNECT SHUNT TRIP SOLENOID ON CIRCUIT BREAKER TO "EMERGENCY POWER OFF" PUSH BUTTON ADJACENT TO BREAKER (SEE KEYNOTE 8). ACTIVATION OF PUSH BUTTON SHALL TRIP BREAKER TO THE OFF POSITION. REFER TO X-RAY EQUIPMENT SHOP DRAWINGS PRIOR TO ROUGH-IN FOR ADDITIONAL ELECTRICAL REQUIREMENTS THIS SPACE.
- 7 PROVIDE TROUGHS AND PULLBOXES (BOTH RECESSED AND SURFACE-MOUNTED) IN THIS AREA AS SHOWN ON X-RAY SITE SPECIFIC PLANS. PROVIDE ALL TROUGH AND PULLBOX OPENINGS AT SIZE AND LOCATION SHOWN ON SITE SPECIFIC PLANS. PROVIDE 2-#14, 1/2" C WITH 10' OF SPARE CONDUCTOR FROM VERTICAL TROUGH AT GENERATOR CABINET TO "IN USE" LIGHT. PROVIDE 2-#14, 1/2" C WITH 10' OF SPARE CONDUCTOR FROM VERTICAL TROUGH AT GENERATOR CABINET TO DOOR SWITCH. PROVIDE ALL OTHER CONCEALED CONDUIT AND WIRING AS DESCRIBED IN X-RAY EQUIPMENT SITE SPECIFIC DRAWINGS.
- 8 APPROXIMATE LOCATION OF "EMERGENCY POWER OFF" PUSH BUTTON. VERIFY FINAL LOCATION WITH ARCHITECT/TENANT PRIOR TO ROUGH-IN. CONTRACTOR SHALL PROVIDE DEVICE IN SINGLE GANG BACKBOX AND SHALL PROVIDE ALL RACEWAY AND WIRING (2-#14, 1/2" C) BACK TO SHUNT TRIP CIRCUIT BREAKER.
- 9 CONTRACTOR SHALL REFER TO APPROVED EQUIPMENT SITE SPECIFIC DRAWINGS FOR ALL REQUIREMENTS PRIOR TO ROUGH-IN. ALL CONDUITS SHALL CONTAIN LARGE RADIUS BENDS. EMPTY CONDUITS SHALL CONTAIN PULLSTRINGS, AND CONDUITS WITH CABLE SCHEDULED TO BE TERMINATED BY EQUIPMENT INSTALLER SHALL BE TAGGED WITH 10' OF SPARE CONDUCTORS ON ENDS. GE HEALTHCARE DEFINUM TEMPO/TEMPO PRO SYSTEM UTILIZED AS BASIS OF DESIGN.
- 10 PROVIDE 120V POWER TO SMOKE CURTAIN CEILING MOUNTED CONTROL PANEL AND CONNECT TO CONTROL SWITCHES ON WALL AT 48" A.F.F. CONFIRM INSTALLATION REQUIREMENTS WITH SMOKE CURTAIN MANUFACTURER. PRIOR TO ROUGH-IN. PROVIDE FIRE ALARM INTERFACE AS DIRECTED ON SPECIAL SYSTEMS PLANS.



1 2ND FLOOR POWER PLAN
1/8" = 1'-0"



2 ENLARGED POWER PLAN - IDF 238A
1/4" = 1'-0"

